

REBATEmate™

PRODUCT INFORMATION

www.rebatemate.com.au
enquiries@rebatemate.com.au

HISTORY

The RebateMate™ was invented by Bill Goss, who has worked in the plasterboard industry for 42 years. Bill has been involved with the manufacturing of plasterboard/plaster products with Boral Plasterboard for 28 years, in Melbourne Australia and is still currently active in this industry.

Over the years, Bill had been called upon to attend a countless number commercial and domestic (housing) problems, always the same complaint 'butt joints'. Realising these problems, Bill sought out to find a solution for the industry. The solution being a revolutionary invention, the RebateMate™.

The RebateMate™ is a hand held tool used to create a rebated or recessed edge to enable a stronger, seamless join in the finished wall. Eliminating the butt joint.

The machine was successfully trailed with outstanding results over 18 months before being made commercially available. Originally this machine was designed for Plasterboard, however after trailing other materials it was also found to generate outstanding results in forming a rebate in seconds to cement sheeting, multiboard and Villaboard / Hardie Board.

INTRODUCTION

The RebateMate™ is designed to cut a recessed edge in preparation for joining sheets of plasterboard, fibre cement sheeting, Villa board or multiboard. Resulting in a stronger seamless join, between sheets in both ceiling and wall applications.

RebateMate™ is a specialised head attachment that eliminates butt joint problems such as weakness, glancing light issues, cracking, visible joints and plaster wastage in the join area.

The RebateMate™ is fitted with a symmetrical diamond cutting disc with a specially designed head, which when fitted to a commercial vacuum system creates a dust free environment. The RebateMate™ can be used on the job, when creating the rebate. Any dust is simply vacuumed away, with the vacuum attached directly to the machine, avoiding any health problems. No dust results in a cleaner, safer and healthier working environment.

Bulkheads awkward butt joints, have been eliminated, by processing before they leave the factory, if this machine is available to the installer, this process can be done on the job.

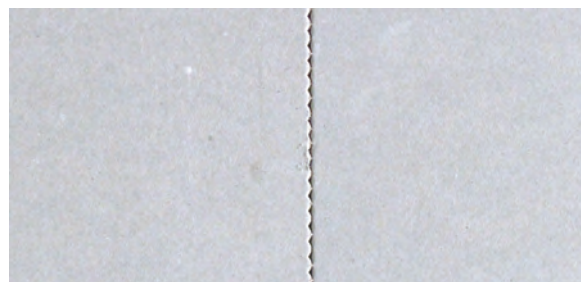
The Rebate machine will solve major problems, in the building industry; the one machine can work on all these materials no changes required. Preset and ready to operate, it will be used as a day to day tool on the job.

WHAT IS A BUTT JOINT

A butt joint, within the plasterboard industry, is encountered when joining two sheets of plaster (or other material) that do not have a recessed edge. This creates several problems with the join.

Including:

- Weakness in the join
- Glancing light issues (lighting exposes any faults)
- Cracking
- Leaving a visible join
- Wastage of plaster in join area
- Labour intense
- Reworks, or maintenance required to call back to fix (after completion of job)



A typical butt joint in plasterboard (above)



The butt joint after using the RebateMate™ (above)

THE RebateMate™ TOOL



SPECIFICATIONS

| | |
|---|---|
| Diamond cutting disc: (outside diameter x inside diameter x thickness) | 110 x 22 x 2mm |
| Rated voltage: | 230-240V~ |
| Frequency: | 50Hz |
| Power input: | 900W |
| No load revolutions per minute: | 11000/min |
| Spindel: | 14mm |
| Insulation class of engine: | 86.3dB (A) |
| Sound pressure level: (according to EN 50144) | 99.3dB (A) |
| Vibration level: (according to EN 50144) | Main:1.99m/s ² Aux:1.53 m/s ² |
| Weight: | 2.1kg |
| External dimensions (mm): | 320 x 128 x 110 |

MAJOR BENEFITS USING RebateMate™

The machine:

- Ready to use out of the box
- Light weight
- Easy to use
- One blade for all applications
- Dust free with vacuum attachment
- In built safety switch
- Safety tested and certified

The result:

- Perfect seamless join
- Enables more plaster to be applied to join
- Strengthens the butt joint area
- Eliminates peaking and cracking where the plasterboard sheets meet
- Very minimal glancing light
- Cost and time savings
- Maintenance and rework savings
- Minimal product wastage (enables the use of off cuts that would normally be discarded)
- Health and Safety Benefits

Occupational health and safety:

One of the major concerns in the plaster industry, is back injuries caused by the weight and size of the plasterboard sheets. This is a problem for the installers, even though there have been improved methods of installing.

The RebateMate™ allows for the use of smaller or cut down sheets to be used without compromising the quality of the finished job. This reduces the potential of back injuries by creating sheets that are smaller, lighter and easier to manoeuvre.

The RebateMate™ is also environmentally friendly, and can reduce the potential of respiratory problems as it is dust free. The specialised head attachment, fitted to a symmetrical cutting wheel can be fitted to most commercial vacuum systems creating a dust free environment.

The cutting blade is the only part that requires maintenance, by changing over when required.

USES

The RebateMate™ has been successfully used on a number of materials and is safe for use with:



plasterboard (incl. wet area)



fibre cement sheeting



multiboard or Villaboard

HOW TO USE THE RebateMate™

Instructions for plasterboard

1. Secure plasterboard on a flat even surface
2. Attach vacuum pipe to tool exhaust cover
3. Rest the edge of flat guide plate on edge of sheet
4. Holding the grip handle turn the tool on
5. Push the tool fully into material under protective paper
6. Guide the tool along the length of sheet to create rebate
7. Lift paper
8. Use the supplied brush to apply full coverage of RebateMate™ premium adhesive to the two exposed surfaces (underside of paper and exposed plaster)
9. Use the supplied finishing tool to firmly re-apply paper to sheet edge
10. Allow two hours before jointing



plasterboard



plasterboard



plasterboard



plasterboard



plasterboard



fibre cement sheeting

Instructions for fibre cement sheet or multiboard

1. Secure cement sheet on a flat even surface
2. Attach vacuum pipe to tool exhaust cover
3. Rest the edge of flat guide plate on edge of sheet with the cutting disc above sheet surface
4. Holding the grip handle turn the tool on
5. Push the tool down into the cement sheet surface
6. Guide the tool along the length of sheet to create rebate
7. Repeat with second run to ensure correct depth and clean edges

HANDY HINTS

For plasterboard

- While rebating ensure the paper has a good coverage of plaster on the underside.
- When working in hot temperatures or high humidity it may be necessary to brush water over the dry plaster before applying the adhesive. This process stops the adhesive from drying too quickly before pressing paper back down.
- Ensure the plasterboard remains secured to a flat, even surface while pressing the paper back down. After completion sheets can be hung immediately. Leave the newly rebated edge to dry for two hours before fastening through it.

For fibre cement sheet or multiboard

- When rebating fibre cement based products, place the RebateMate™ Tool on top of the sheet and enter from either side of the sheet commencing the rebate. Glide across the sheet being mindful not to press down too hard on the first pass - this process will take off the first layer. Complete a second pass by repeating the process, apply a little extra pressure to achieve the required rebate depth.
- When the diamond cutting blade becomes worn, it must be replaced, otherwise it will place unnecessary pressure on the power tool and it will effect the overall performance in obtaining your desired rebate.

ACCESSORIES



1. Finishing tool (included)

The RebateMate™ finishing tool is specifically used to finish the rebated edge after the RebateMate™ Premium Adhesive has been applied. By running the finishing tool along the rebate, you will ensure a perfect bubble free finish every time.

2. Application Brush (included)

The RebateMate™ application brush is used to apply the RebateMate™ Premium Adhesive to the rebated edge, beneath the exposed paper. Be sure to use the supplied brush to apply an even amount of RebateMate™ Premium Adhesive to the rebated edge.

3. Chuck (included)

The specially designed chuck used to release loosen the diamond cutting disc for replacement.

3. Allen key (included)

The Allen key is designed to remove the vacuum cover for cleaning and replacement of the diamond cutting disc.

5. Vacuum attachment (included)

The RebateMate™ vacuum attachment can be used as an adapter to suit most commercial vacuums. Attaching a vacuum to the RebateMate™ tool creates a completely dust free environment.

6. Diamond cutting wheel - 110mm (replacements sold separately)

The RebateMate™ diamond cutting wheel is a replaceable blade that is purpose built for the task of creating rebates in plasterboard and cement sheet products. The blade is easily replaced and additional units are sold separately.

PREMIUM ADHESIVE (sold separately)

RebateMate™ Premium Adhesive has been specially formulated and developed exclusively for use with plasterboard products.

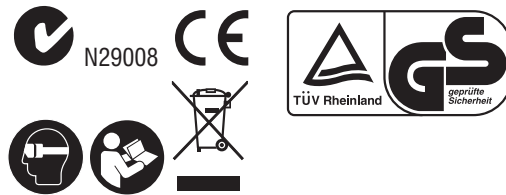
Supplied ready to use, the adhesive is white in colour, non-toxic and cleans up easily with water. When applied with the supplied brush (supplied with the RebateMate™ tool) the RebateMate™ Premium Adhesive dries clear for a perfect finish every time.

- No mixing required
- Non-toxic
- Specially formulated for plasterboard
- Hang plaster straight away
- 2 hour drying time (before stopping up)
- Available in 2 Litre tubs



PATENTED AND CERTIFIED TECHNOLOGY

Australia innovation patent certified
International patent pending (USA and Canada)



FAQs

What surfaces can RebateMate™ Power Tool Be used on?

Plasterboard (incl. wet area), fibre cement sheeting and Multiboard

Do I need to have a different blade for each surface?

No - the one blade is specially designed to rebate all surfaces.

Why should I use RebateMate™ Power Tool?

It will save time and is very cost efficient giving you a straight join, therefore quality workmanship.

How many rebates can be rebated from one blade?

Approx. 900 lineal metres using plasterboard and approx. 120 lineal metres using fibre cement sheeting. This is a guide only.

How long does it take to do a rebate?

About one minute to complete the process, rebate and glue paper to form rebate edge using plasterboard; using fibre cement sheeting, the process takes about 30 seconds, as there is no adhesive required.

What happens if you tear the paper?

This does not affect rebate. Glue down as normal with finishing tool.

What type of glue is used?

Specially formulated glue for RebateMate™.

How long before a rebated sheet can be hung?

Sheets can be hung immediately.

How long does it take the glue dry?

Leave the newly rebated edge to dry for two hours before fastening through it.

How many rebates can you get out of one litre of glue?

Approx. 100 lineal metres.

Does the rebate affect the strength or quality of board?

No, it does not affect the quality at all. Once dry, the board is just as strong.

How easily can I trowel the rebate?

A RebateMate™ joint can be finished like a normal rebate join ie: trowel or flat boxes.

How does using the rebate tool affect the environment?

When used with vacuum system, the process is virtually dust free.

An Australian invention has defeated the butt joint...

The RebateMate™ is a revolutionary power tool designed to cut rebates along the edges of both plasterboard and cement sheet in preparation for jointing.

RebateMate™ is simple to use and delivers substantial cost and time savings while producing excellent results every time. This unique tool eliminates butt joints and the problems commonly associated with them including joint weakness, glancing light, peaking, cracking, visible joins and wastage.

The RebateMate™ attaches to most commercial vacuums creating a safe and relatively dust free work environment.

JOIN THE REVOLUTION, ELIMINATE BUTT JOINTS WITH THE REBATEmate™



...and, it's got people talking!

"The tool is simple and easy to use and the results were excellent."

"The RebateMate™ is the tool of the future, solving butt joint problems completely."

"I was simply amazed at the performance of this tool and the bonus of no dust floating around - what a breakthrough."

"Over the years I have seen many changes and developments in our industry, this machine solves one of the major problems that the industry has had to put up with for the last 50 years BUTT JOINTS."

"The time and cost savings were enormous and the onsite architects were very impressed with the final results."

"RebateMate™ has a broad impact across our trade and creates savings at every task."

"The RebateMate™ worked perfectly, it eliminated all unsightly peaking."

REBATEmate™



Instructions...

INSTRUCTIONS FOR PLASTERBOARD

1. Secure plasterboard on a flat even surface
2. Attach vacuum pipe to tool exhaust cover
3. Rest the edge of flat guide plate on edge of sheet
4. Holding the grip handle turn the tool on
5. Push the tool fully into material under protective paper
6. Guide the tool along the length of sheet (left to right) to create rebate
7. Lift paper
8. Use a brush to apply full coverage of RebateMate™ adhesive to the two exposed surfaces (underside of paper and exposed plaster)
9. Use joint knife to firmly re-apply paper to sheet edge
10. Allow two hours before jointing



INSTRUCTIONS FOR CEMENT SHEET

1. Secure cement sheet on a flat even surface
2. Attach vacuum pipe to tool exhaust cover
3. Rest the edge of flat guide plate on edge of sheet with wheel above sheet surface
4. Holding the grip handle turn the tool on
5. Push the tool down into the cement sheet surface
6. Guide the tool along the length of sheet (left to right) to create rebate
7. Repeat with second run to ensure correct depth and clean edges



Product Information:

| Code | Description | Barcode |
|------|--------------------------|---------------|
| RM-T | RebateMate™ | 9315778000451 |
| RM-D | RebateMate™ Cutting Disc | 9315778000468 |
| RM-G | RebateMate™ Adhesive | 9315778000475 |

Australian Patent, International Innovation Patent Pending.

**WATCH IT
OPERATING**



NOTES

- Only RebateMate™ Adhesive is approved for use with the RebateMate system
- Refer to RebateMate™ Instruction Manual for full operating instructions

REBATEmate™

RebateMate: 1 Loop Road Werribee, Victoria, Australia

P: +61 425 795 829 E: john.clear@rebatebate.com.au W: www.rebatebate.com.au

see it in action





www.rebatemate.com.au
enquiries@rebatemate.com.au